

# ILS RWY 29

LOC/DME I-AKW <b>110.5</b> Chan 42	APCH CRS <b>285°</b>	Rwy ldg 11,520 THRE 5873 Arpt Elev 5877
--	-------------------------	---

ACAA

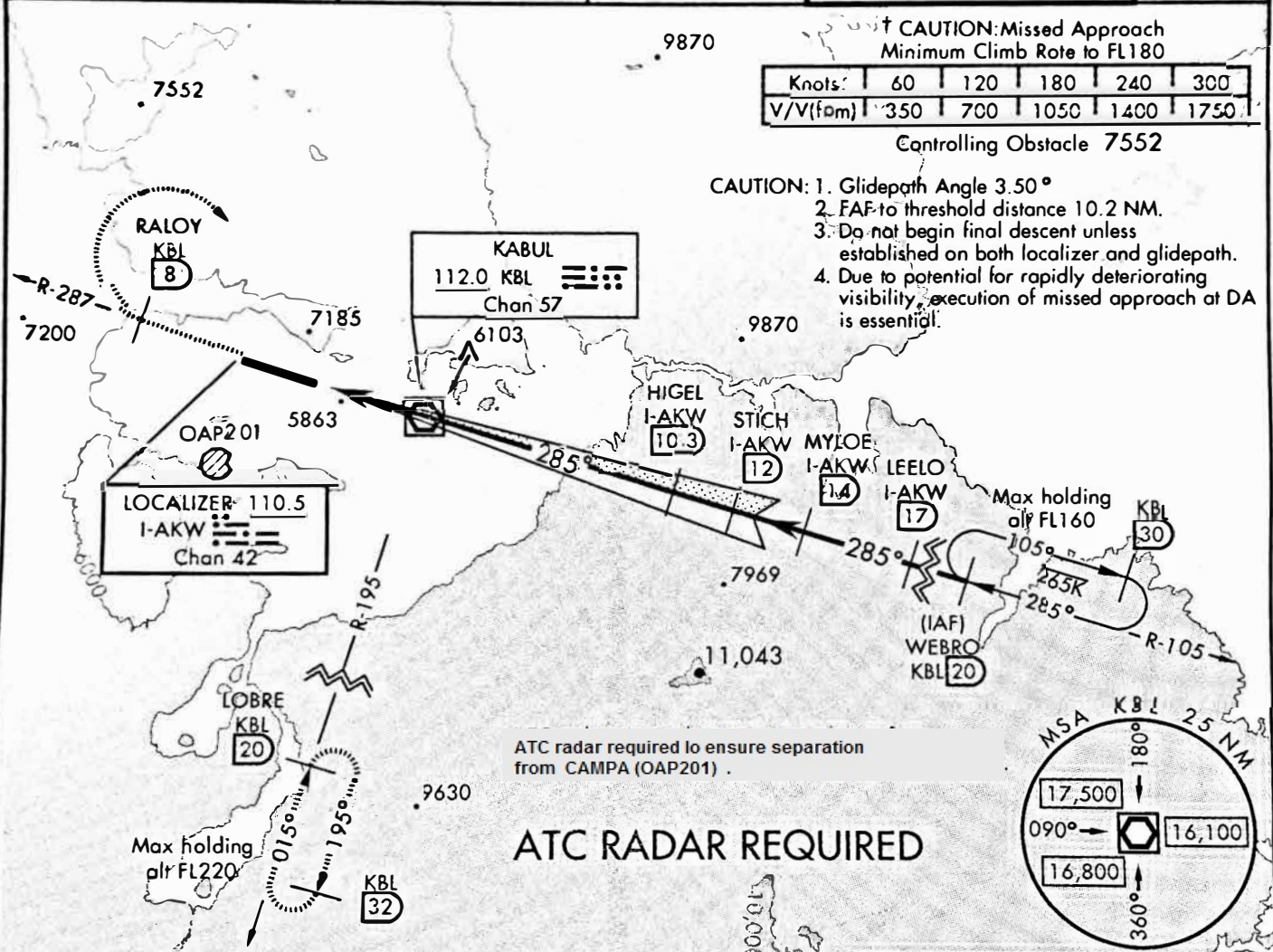
HAMID KARZAI INTL (OAKB)

• When ALS inop, increase vis to 5600m.  
•• When ALS inop, increase vis to 1400m.

ALSF-1  
(A1)

↑ MISSED APPROACH: Climb to FL180 via KBL VOR/DME R-287 to RALOY, then turn rgt direct KBL. Cross KBL VOR/DME and proceed out the KBL R-195 to LOBRE and hold. Cont climb-in-hold to FL180.

ATIS <b>130.15</b>	KABUL APP CON <b>131.6 360.6</b>	BAGRAM APP CON <b>127.925 379.3</b>	KABUL ARR <b>132.5 301.95</b>	KABUL TOWER <b>120.6 284.275</b>	GND CON <b>125.4</b>
-----------------------	-------------------------------------	--	----------------------------------	-------------------------------------	-------------------------



↑ CAUTION: Missed Approach  
Minimum Climb Rate to FL180

Knots:	60	120	180	240	300
V/V(ft/m)	350	700	1050	1400	1750

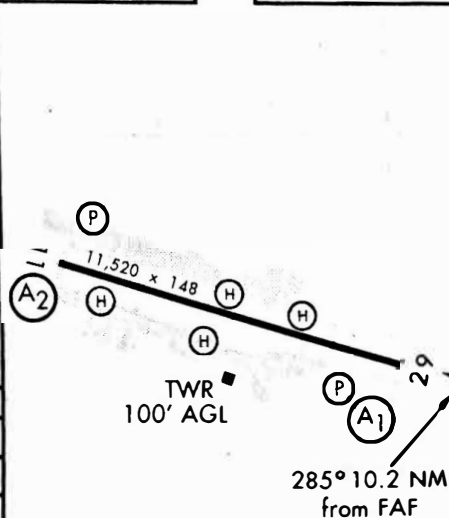
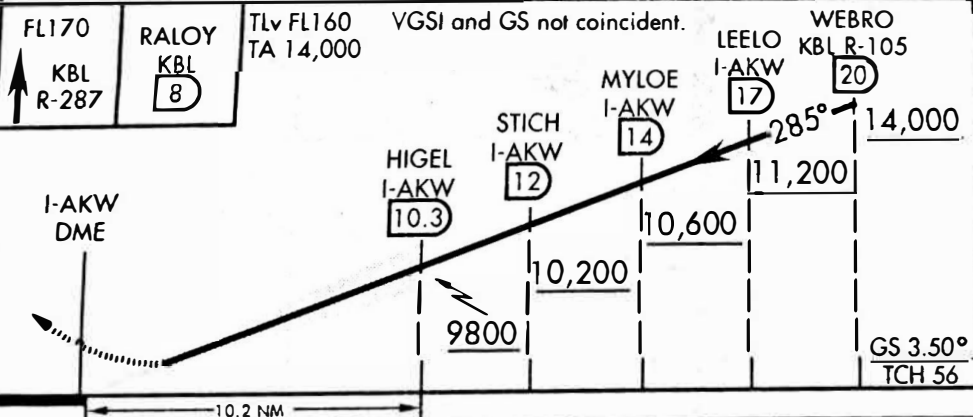
Controlling Obstacle 7552

- CAUTION:
1. Glidepath Angle 3.50°
  2. FAF to threshold distance 10.2 NM.
  3. Do not begin final descent unless established on both localizer and glidepath.
  4. Due to potential for rapidly deteriorating visibility, execution of missed approach at DA is essential.

ATC radar required to ensure separation from CAMPA (OAP201).  
**ATC RADAR REQUIRED**

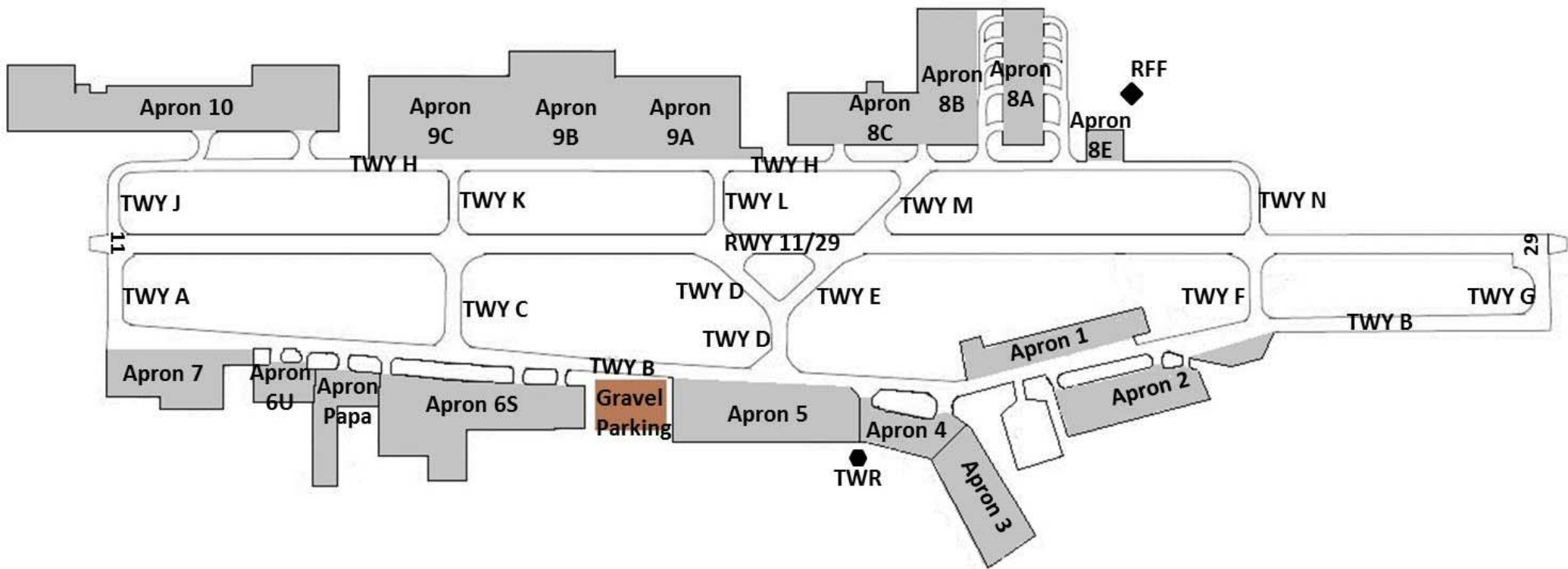
EMERG SAFE ALT 100 NM 21,700

ELEV 5877	THRE 5873
-----------	-----------



CATEGORY	A	B	C	D
S-ILS 29*	7052-4900m	1179	(1200-4900m)	
S-LOC 29	NOT AUTHORIZED			
CIRCLING	NOT AUTHORIZED			
BELOW MINIMA REQUIRES MISSED APPROACH CLIMB GRADIENT OF 350 ft/NM				
S-ILS 29**	6193-750m	320	(400-750m)	

HIRL Rwy 11-29



# KABUL FOUR DEPARTURE (OBSTACLE)

ACAA

KABUL, AFGHANISTAN

ATIS 130.15  
 GND CON 125.4  
 KABUL TOWER 120.6 284.275  
 KABUL APP CON 131.6 360.6  
 KABUL DEP 132.5 301.95

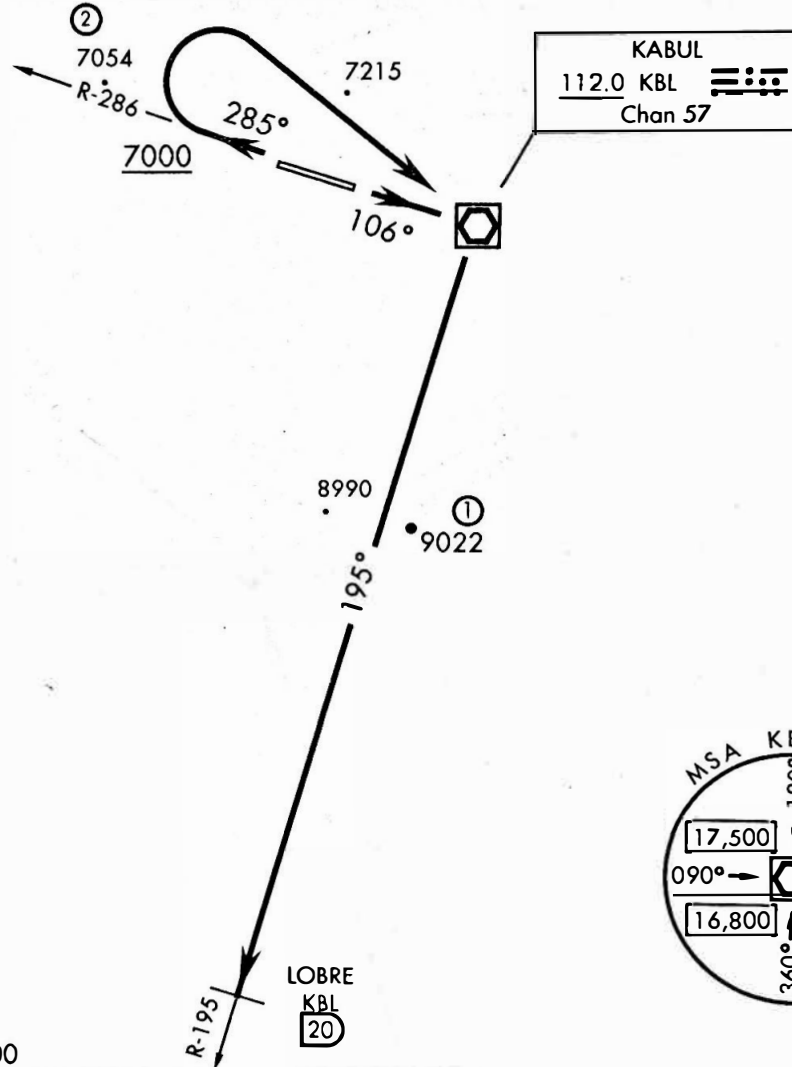
N/A for CAT E aircraft.  
 Do not exceed 250 KIAS until established on KBL R-195.

- ① 8.3 NM from Rwy 11
- ② 4.6 NM from Rwy 29

Rwy	Knots	60	120	180	240	300
11 (a)	V/V(fpm)	385	770	1155	1540	1925
29 (b)	V/V(fpm)	444	888	1332	1776	2220

Minimum Climb Rate

- (a) To 11,000
- (b) To 9900



**RADAR or DME REQUIRED**

EMERG SAFE ALT 100 NM 21,700

TLv FL160  
TA 14,000

## DEPARTURE ROUTE DESCRIPTION

TAKE-OFF RWY 11: Climb via KBL VOR/DME R-286 to KBL VOR/DME, then turn right to intercept R-195 to LOBRE. Maintain ATC assigned altitude.

TAKE-OFF RWY 29: Climb heading 285° until at or above 7000. Then turn right direct KBL VOR/DME and proceed outbound R-195 to LOBRE. Maintain ATC assigned altitude.

# KABUL FOUR DEPARTURE (OBSTACLE)

Amdt 1 17 AUG 2017  
 TERPS

KABUL, AFGHANISTAN  
 HAMID KARZAI INTL (OAKB)

# HAMID KARZAI INTERNATIONAL (OAKB)

## IFR TAKE-OFF MINIMUMS AND DEPARTURE PROCEDURES

Civil Airports and Selected Military Airports

CIVIL USERS: Title 14 Code of Federal Regulations Part 91 prescribes take-off rules and establishes take-off minimums for certain operators as follows: (1) Aircraft having two engines or less - one statute mile. (2) Aircraft having more than two engines - one-half statute mile.

Airports with IFR take-off minimums other than standard are listed below. Departure procedures and/or ceiling visibility minimums are established to assist all pilots conducting IFR flight in avoiding obstacles during climb to the minimum enroute altitude. Take-off minimums and departures apply to all runways unless otherwise specified. Altitudes, unless otherwise indicated, are minimum altitudes in feet MSL.

MILITARY USERS: Special IFR departure procedures not published as Standard Instrument Departure (SIDs) and civil take-off minima are included below and are established to assist pilots in obstacle avoidance. Refer to appropriate service directives for take-off minimums.

AIRPORT NAME	TAKE-OFF MINIMUMS
--------------	-------------------

### HAMID KARZAI

INTERNATIONAL (OAKB) Amdt 2, 15036

Kabul, Afghanistan

Diverse departure not authorized.

#### TAKE-OFF MINIMUMS:

**Rwy 11:** Standard with minimum climb of 390 ft/NM to 10,900 or 4300-4800m for climb in visual conditions.

**Rwy 29:** Standard with minimum climb of 450 ft/NM to 9400 or 4300-4800m for climb in visual conditions.

#### DEPARTURE PROCEDURE:

**Rwy 11, 29:** Obtain ATC approval for VCOA when requesting IFR clearance. Climb in visual conditions to cross KBL VOR/DME at or above 10,000 then intercept KBL R-195 to LOBRE. Remain within 5.2 NM of OAKB during climb in visual conditions.

#### TAKE-OFF OBSTACLES:

**Rwy 11:** Tower 2805' from DER, 1114' right of centerline, 86' AGL/5951' MSL. Terrain 41' from DER, 500' left of centerline, 5876' MSL. Terrain 46' from DER, 512' left of centerline, 5876' MSL.

**Rwy 29:** Power line 1824' from DER, 1334' right of centerline, 115' AGL/5977' MSL. Building 895' from DER, 461' left of centerline, 10' AGL/5887' MSL. Pylon 2437' from DER, 1039' right of centerline, 98' AGL/5959' MSL. Power line 3652' from DER, 566' right of centerline, 115' AGL/5977' MSL. Disabled aircraft 667' from DER, 308' left of centerline, 29' AGL/5899' MSL. Power line 1826' from DER, 1303' left of centerline, 115' AGL/5984' MSL. Terrain 0' from DER, 500' left of centerline, 5873' MSL. Terrain 8' from DER, 109' right of centerline, 5873' MSL. Terrain 0' inward from DER, 500' right of centerline, 5873' MSL. Tower 925' from DER, 476' left of centerline, 25' AGL/5892' MSL. Power line 3752' from DER, 323' right of centerline, 98' AGL/5967' MSL.

LOGAR THREE DEPARTURE (RNAV 1)

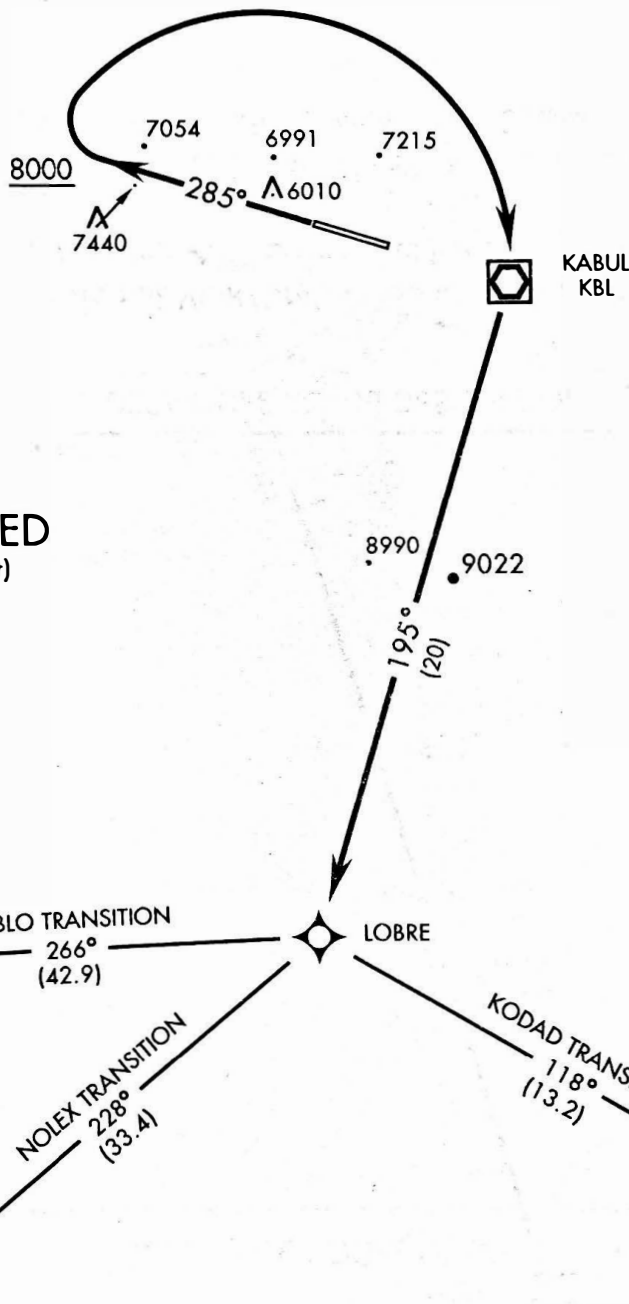
A CAA

KABUL, AFGHANISTAN

ATIS 130.15  
 GND CON 125.4  
 KABUL TOWER 120.6 284.275  
 KABUL APP CON 131.6 360.6  
 KABUL DEP 132.5 301.95

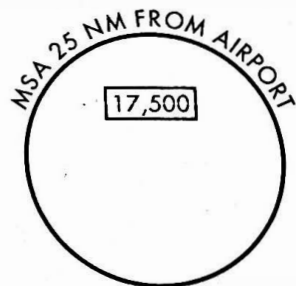
Rwy	Knots	60	120	180	240
29	V/V(fom)	450	900	1350	1800

Minimum Climb Rate to 12,000



GPS REQUIRED

RADAR REQUIRED  
 (For Non-GPS Aircraft)



EMERG SAFE ALT 100 NM 21,700

Note: Chart not to scale

TLv FL160  
 TA 14,000

DEPARTURE ROUTE DESCRIPTION

TAKE-OFF RWY 29: Climb heading 285° to 8000, then turn right direct KABUL. At KABUL, turn right track 195° to LOBRE, thence...

KODAD TRANSITION: Turn left, track 118° to KODAD and maintain assigned altitude.

NOLEX TRANSITION: Turn right, track 228° to NOLEX and maintain assigned altitude.

SIBLO TRANSITION: Turn right, track 266° to SIBLO and maintain assigned altitude.

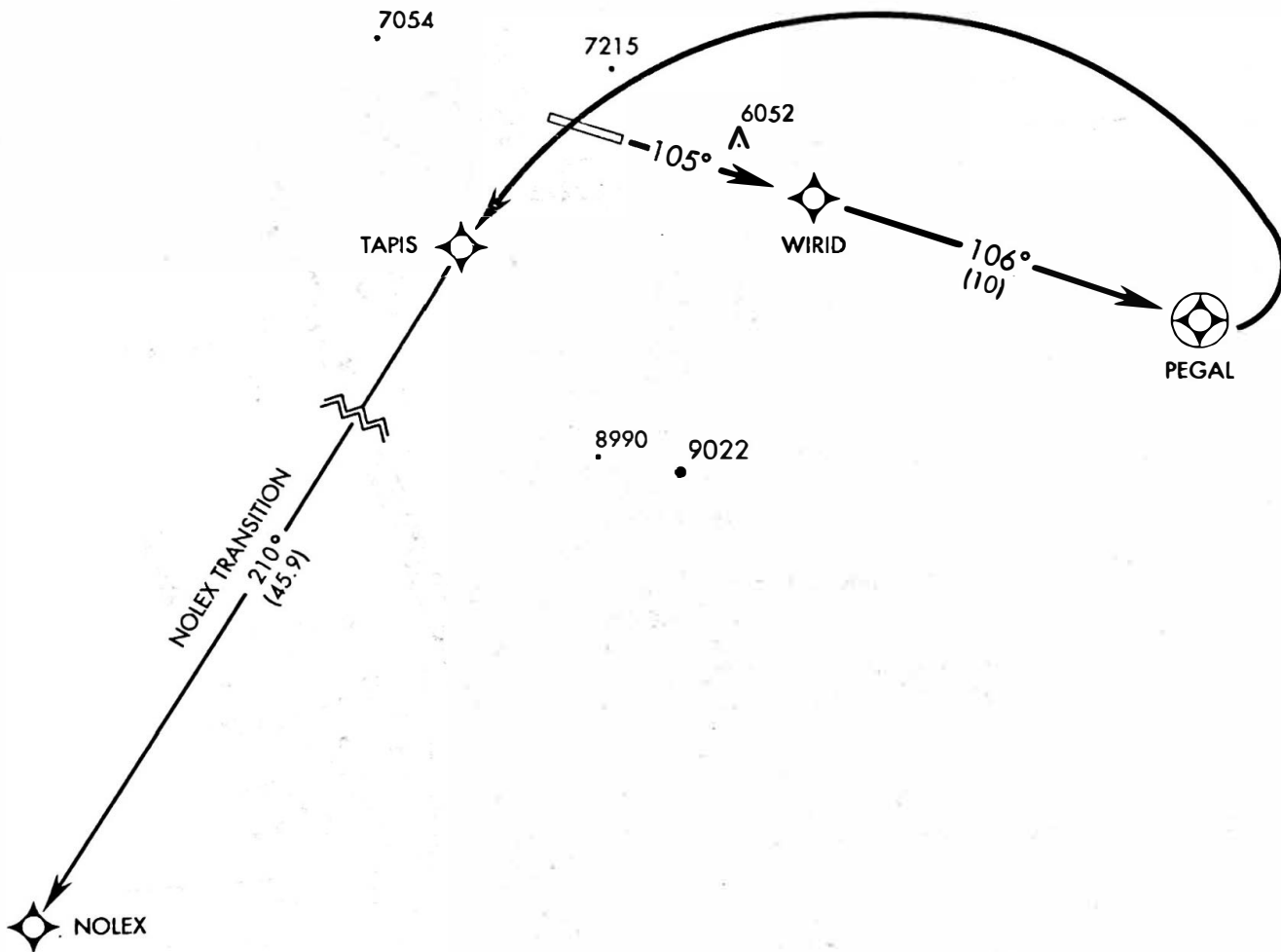
TAPIS TWO DEPARTURE (RNAV 1) ACAA

KABUL, AFGHANISTAN

ATIS 130.15  
 GND CON 125.4  
 KABUL TOWER 120.6 284.275  
 KABUL APP CON 131.6 360.6  
 KABUL DEP 132.5 301.95

Rwy	Knots	60	120	180	240
11	V/V(fpm)	335	670	1005	1340

Minimum Climb Rate to 12,200

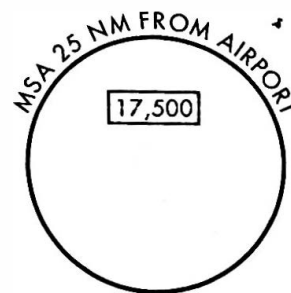


GPS REQUIRED

RADAR REQUIRED  
 (For Non-GPS Aircraft)

EMERG SAFE ALT 100 NM 21,700

TLv FL160  
 TA 14,000



DEPARTURE ROUTE DESCRIPTION

**TAKE-OFF RWY 11:** Climb via 105° direct WIRID, then track 106° to PEGAL. At PEGAL, turn left direct TAPIS and maintain ATC assigned altitude.

**NOLEX TRANSITION:** Depart TAPIS and track 210° to NOLEX, maintain ATC assigned altitude.

TAPIS TWO DEPARTURE (RNAV 1)

KABUL, AFGHANISTAN  
 HAMID KARZAI INTL (OAKB)



VOR/DME KBL <b>112.0</b> Chon 57	APCH CRS <b>282°</b>	Rwy ldg 11,520 THRE 5873 Arpt Elev 5877
--	-------------------------	---

ACAA

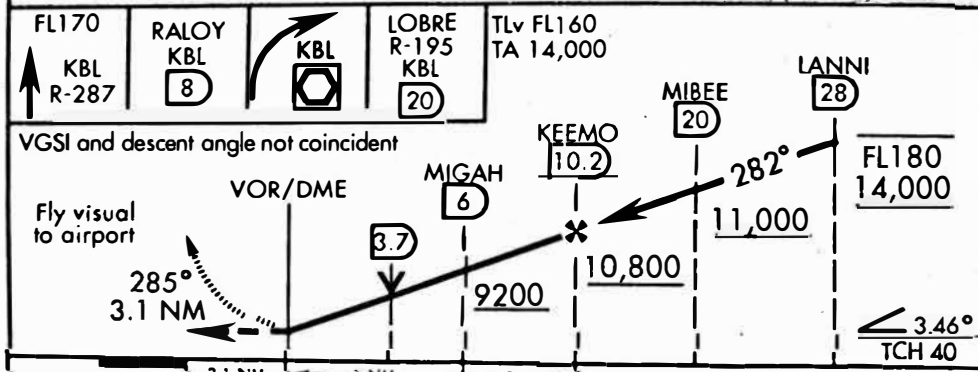
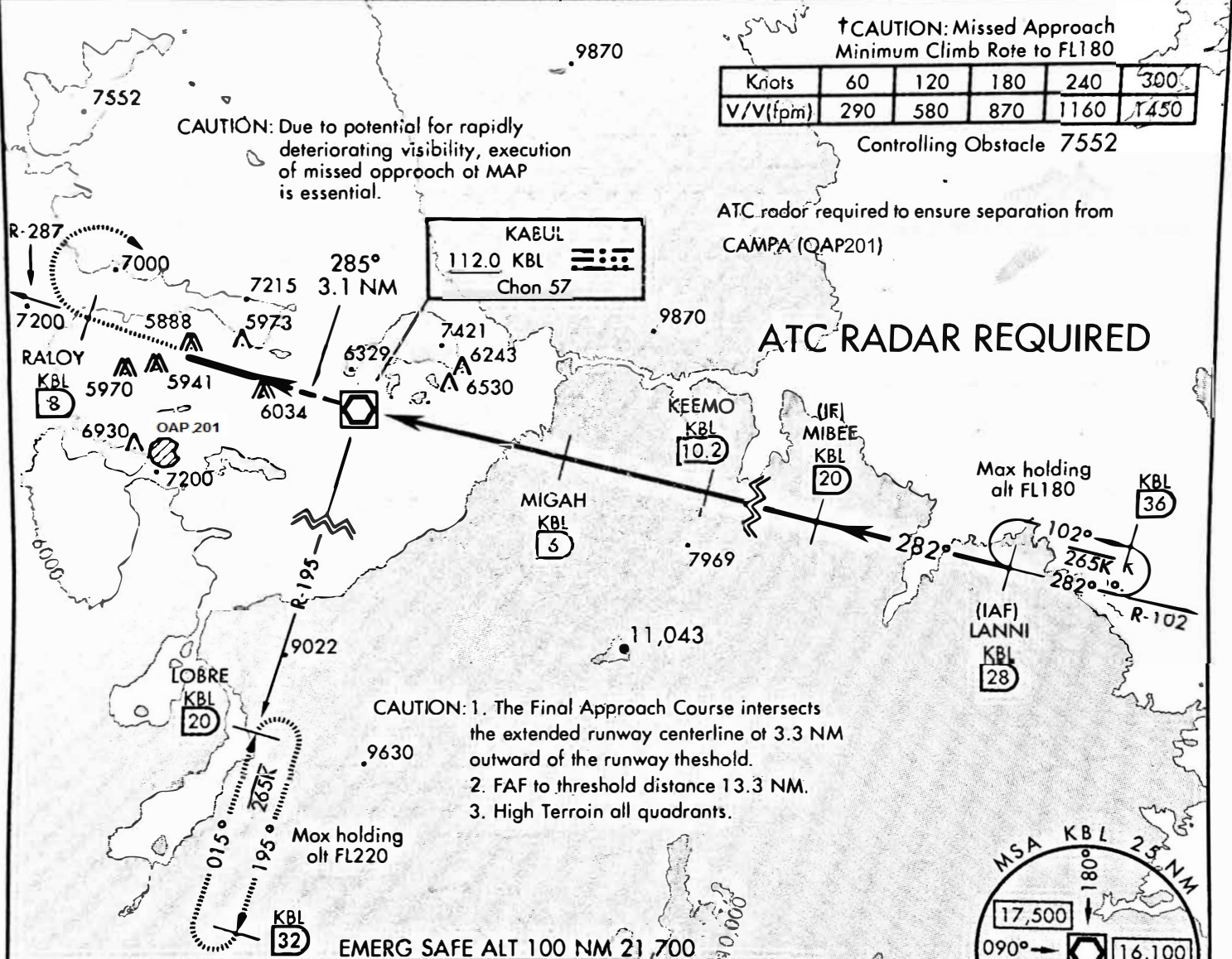
HAMID KARZAI INTL (OAKB)

▲ When ALS inop, increase vis to 5800m.  
 \*\* Circling not authorized S of Rwy 11-29.  
 Night operations are not authorized for Rwy 11.



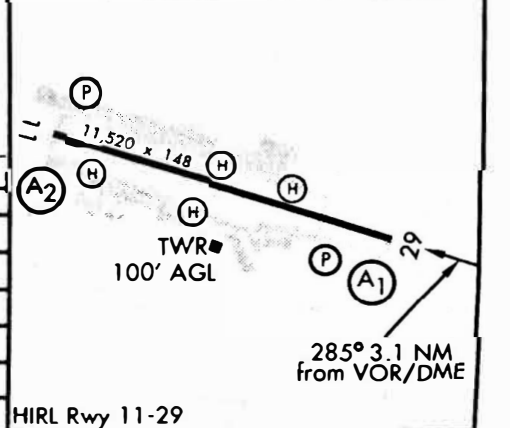
† MISSED APPROACH: Climb to FL180 via KBL VOR/DME R-287 to RALOY, then turn right to KBL. Cross KBL and proceed outbd on KBL R-195 to LOBRE and hold. Cont climb-in-hold to FL180.

ATIS <b>130.15</b>	KABUL APP CON <b>131.6 360.6</b>	BAGRAM APP CON <b>127.925 379.3</b>	KABUL ARR <b>132.5 301.95</b>	KABUL TOWER <b>120.6 284.275</b>	GND CON <b>125.4</b>
-----------------------	-------------------------------------	--	----------------------------------	-------------------------------------	-------------------------



ELEV 5877	THRE 5873
-----------	-----------

CATEGORY	A	B	C	D
S-29 *	8880-5100m	3007	(3100-5100m)	
CIRCLING **	8800-5800m	3003	(3100-5800m)	
BELOW MINIMA REQUIRES A MISSED APPROACH CLIMB GRADIENT OF 290 ft/NM				
S-29 *	8480-5100m	2607	(2700-5100m)	
CIRCLING **	8480-5800m	2603	(2700-5800m)	



APCH CRS 284°  
 Rwy ldg 11,520  
 THRE 5873  
 Arpt Elev 5877

ACAA

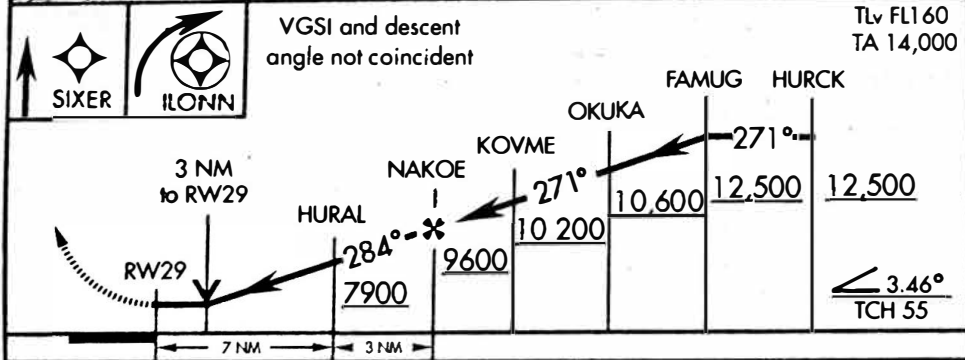
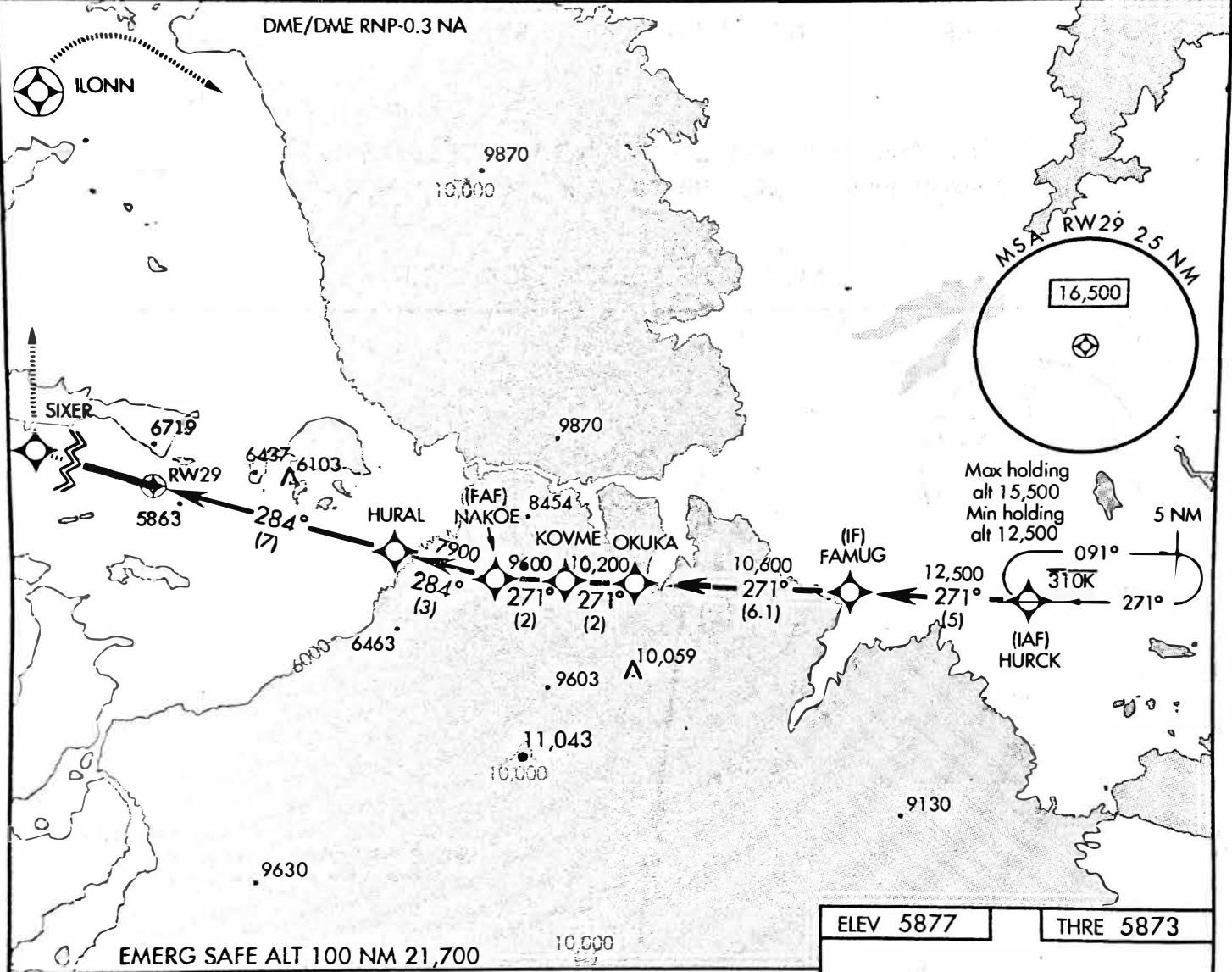
HAMID KARZAI INTL (OAKB)

\* When ALS inop, increase CAT A vis to 2000m, CAT B vis to 2400m, CAT CD vis to 5000m.  
 \*\* Circling not authorized south of Rwy 11-29. Night operations are not authorized for Rwy 11.



MISSED APPROACH: Climb Direct SIXER, then track 358° to ILONN. After ILONN, track 111° to HURCK climbing to 12,500ft. Maintain ATC assigned altitude and hold.

ATIS <b>130.15</b>	KABUL APP CON <b>131.6 360.6</b>	BAGRAM APP CON <b>127.925 379.3</b>	KABUL ARR <b>132.5 301.95</b>	KABUL TOWER <b>120.6 284.275</b>	GND CON <b>125.4</b>
-----------------------	-------------------------------------	--	----------------------------------	-------------------------------------	-------------------------



CATEGORY	A	B	C	D
LNAV MDA *	7040-1200m 1167 (1200-1200m)	7040-1600m 1167 (1200-1600m)	7040-4600m 1167 (1200-4600m)	
CIRCLING **	7540-2400m 1663 (1700-2400m)	7540-2400m 1663 (1700-2400m)	7540-5000m 1663 (1700-5000m)	

